



- ⦿ Working distance of 500mm
- ⦿ 30x optical zoom
- ⦿ Very fast and responsive auto focus
- ⦿ Compatible with a lot of optical accessories
- ⦿ Laser pointer for precision
- ⦿ Perfect for rework or small items assembly

M30 Freesight

EASY TO USE

Cost effective, plug-and-play and ergonomic video inspection system producing bright pictures for fast and reliable optical inspection. Focusing on the ergonomic and work environment of the user our optical inspection cameras and systems make your daily inspection needs easy, quick and efficient.

HIGH QUALITY OPTICS

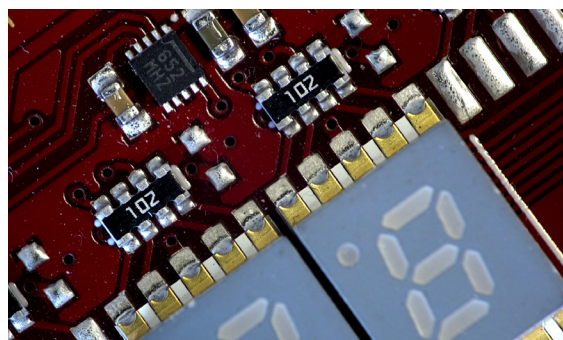
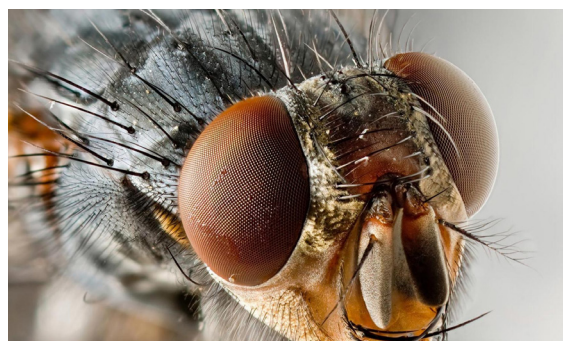
The M30 Freesight has a powerful 30x optical zoom, 65 mm to 500 mm working distance range and a swift auto focus for clear examination of your object in full HD resolution (1920x1080).

FULLY FLEXIBLE

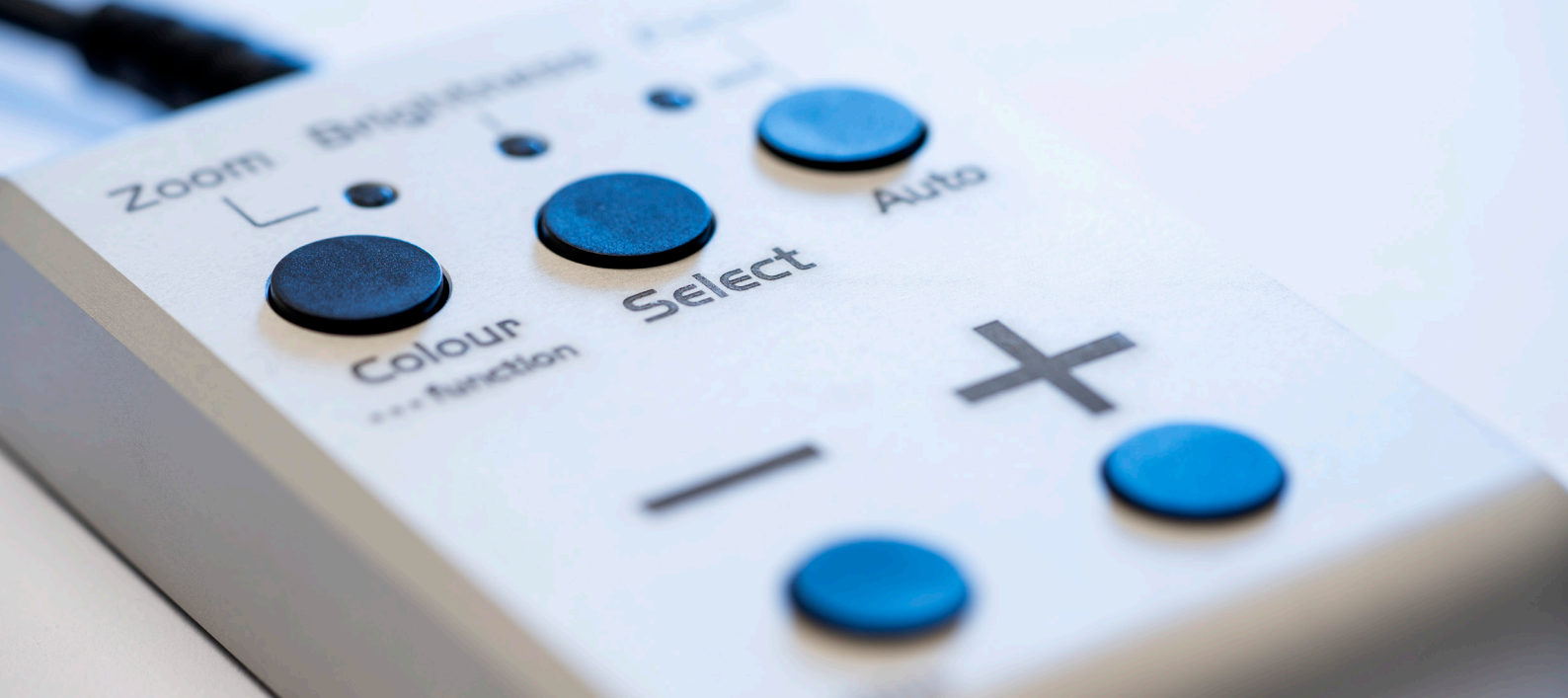
Our complete range of products are designed for full modularity. An extensive range of lenses, illumination, software, mounting and stand configurations allows for versatile installation in all working situations.

APPLICATIONS

Electronic production, quality control, jewelry assembly, tooling manufacturing, automotive, aerospace, defense industry, medical production, pathology grossing stations, forensics, life science.



Example images in full HD



M30 Freesight HDMI Technical Specification

Image Sensor	1/2.8" CMOS, 3.2 mega pixels
Picture Quality	Full HD 1080p (1920x1080)
Output Signal	1080/59.94i, 1080/50i
Optics	30x optical zoom with autofocus, F1.6 to F14 (F4.7 to F14 at 30x)
Working Distance (w/o Close-up)	~ 350-500 mm
Working Distance with +2 Close-up	~ 210-240 mm
Working Distance with +5 Close-up	~ 125-135 mm
Working Distance with +10 Close-up	~ 65-73 mm
Field of View at 1x zoom	~ 522x293 mm
Field of View at 10x zoom	~ 52x29 mm
Field of View at 20x zoom	~ 26x14.8 mm
Field of View at 30x zoom +2 Close-up	~ 8.6x4.8 mm (60x magnification on 24" monitor)
Field of View at 30x zoom +5 Close-up	~ 5x2.8 mm (100x magnification on 24" monitor)
Field of View at 30x zoom +10 Close-up	~ 3.0x1.7 mm (170x magnification on 24" monitor)
Camera Control	Integrated aluminium housing Control unit with function buttons
Adjustable Parameters	Optical zoom, brightness, focus, picture freeze, zoom factor display, setup save & recall
Laser Pointer	Red LED laser, 0,5 W output power, Laser class 2
Inputs	DC in (5-pin MiniDin)
Outputs	FHD Component Y/Pb/Pr Video out (3xRCA), External foot pedal (stereo jack)
Storage Environment	*-20° - +60° C, 20-95% RH, non-condensing
Operating Environment	*-5° - +60° C, 20-95% RH, non-condensing
Power Requirement	12 V VDC, 4.0 W max
Weight of camera	710 g without control unit, 970 g with control unit